



3 Torre Grove, Bradford, BD6 3PG

**** WELL PRESENTED THROUGHOUT ** SUPERB YOUNG FAMILY HOME/FIRST TIME PURCHASE ****
Viewing is strongly advised for lovely INNER TOWN HOUSE which the current owners have maintained and tastefully decorated over the years. Briefly comprising: entrance hall, lounge with log burner, modern kitchen, THREE BEDROOMS and bathroom. Externally are large well stocked gardens to the rear with off road parking to the front. Benefitting further from GCH ad DG the property is well placed for many amenities, shops, schools and commute. **VIEWING IS STRONGLY ADVISED**

£137,500

3 Torre Grove, Bradford, BD6 3PG

ENTRANCE HALL

LOUNGE 12'10" x 12'4" (3.9m x 3.76m)

Lovely size lounge, tastefully decorated throughout with burner stove

KITCHEN 13'1" x 7'9" (4m x 2.36m)

Modern fitted kitchen with a selection of wall and base units to include display cabinets. Worktops, cooker set into chimney breast and plumbing for washer. Large pantry area off

FIRST FLOOR

BEDROOM ONE 11'5" x 10'1" (3.48m x 3.07m)

Laminate flooring

BEDROOM TWO 10'1" x 9'5" (3.07m x 2.87m)

Laminate flooring and built in store cupboard

BEDROOM THREE 6'9" x 5'8" (2.06m x 1.73m)

Laminate flooring

BATHROOM

Modern bathroom with shower over bath, sink and W.C. Fully tiled

OUTSIDE

Off road parking to the front with raised borders. Large, well stocked gardens to the rear

FURTHER INFORMATION

Council Tax - Band A

Tenure - Freehold

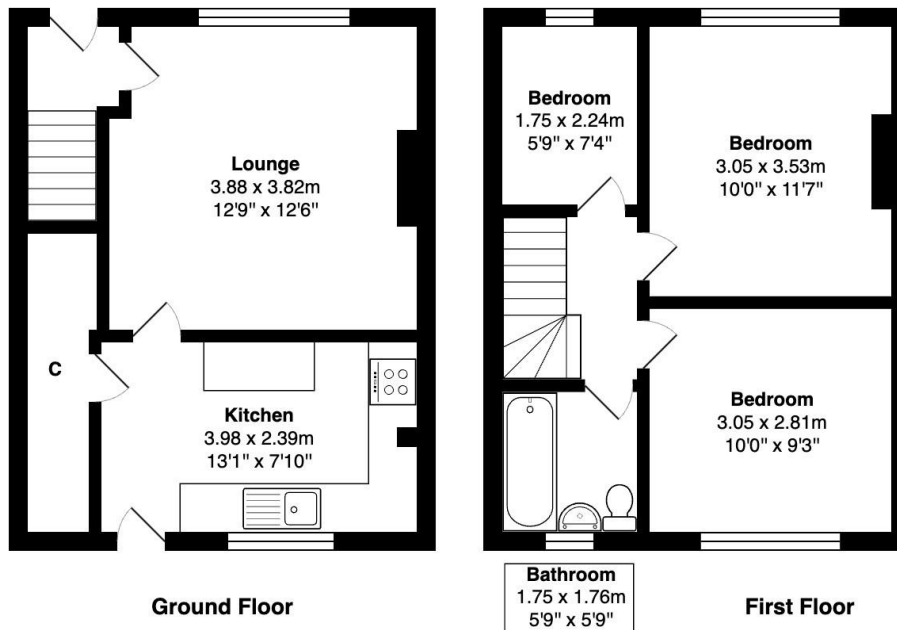
MORTGAGES

We recommend The Mortgage Maestro, who are whole of market mortgage brokers. They have exclusive rates that are not available on the high street. Ben is on hand to discuss all of your mortgage needs. If you would like to arrange an appointment, contact us today.

Your home may be repossessed if you do not keep up to repayments on your mortgage.

The Fixtures & Appliances included have not been tested and therefore no guarantee can be given that they are in working order. Every care has been taken with the preparation of these sales particulars, but complete accuracy cannot be guaranteed. If there is any point, which is of particular importance you should obtain independent verification, or we will be pleased to check them for you. These sales particulars do not constitute a contract or part of a contract.





Total Area: 62.6 m² ... 673 ft²

All measurements are approximate and for display purposes only