



10 Lesmere Grove, Horton Bank Top, Bradford, BD7 4JY

**** EXTENDED** FIVE BEDROOMS ** EN-SUITE FACILITIES ** GOOD SIZE GARDENS TO REAR **** Well appointed EXTENDED SEMI DETACHED offering versatile accommodation and ideal for multi generational families. Briefly comprising: entrance hall, lounge, large dining kitchen and bedroom five with en-suite to the ground floor. Four bedrooms, one with en-suite and family bathroom to the first floor. Externally there is off road parking and good size gardens to the rear. Situated within a cul de sac and ideal for many amenities, shops, schools and commuter links. Would make an ideal FAMILY HOME.

£250,000

T 01274 601119 **E** wibsey@robertwatts.co.uk **W** robertwatts.co.uk
Wibsey Office: 140 High Street, Wibsey, BD6 1JZ

f RWEstateAgents **T** @robertwatts_

arla | propertymark naea | propertymark

10 Lesmere Grove, Horton Bank Top, Bradford, BD7 4JY

ENTRANCE HALL

LOUNGE 11'2" x 10'2" (3.4m x 3.1m)

Feature fireplace with fire

DINING KITCHEN 17'6" x 11'2" (5.33m x 3.4m)

Family sized dining kitchen with an array of wall and base units, worktops with sink and drainer. Oven hob and extractor, plumbing for washer and patio doors leading out to the rear gardens

BEDROOM FIVE 10'4" x 7'9" (3.15m x 2.36m)

Ground floor bedroom

WET ROOM/EN SUITE

Wet room / en suite which has been adapted for disabled use

FIRST FLOOR

BEDROOM ONE 10'11" x 10'8" (3.33m x 3.25m)

Fitted wardrobes

BEDROOM TWO 10' x 11'2" (3.05m x 3.4m)

Fitted wardrobes

BEDROOM THREE 6' x 6'9" (1.83m x 2.06m)

BEDROOM FOUR 10'4" x 13' (3.15m x 3.96m)

WET ROOM/WC

OUTSIDE

Occupies a cul de sac position, with flagged parking/driveway to the front. Pleasant garden to the rear with large shed

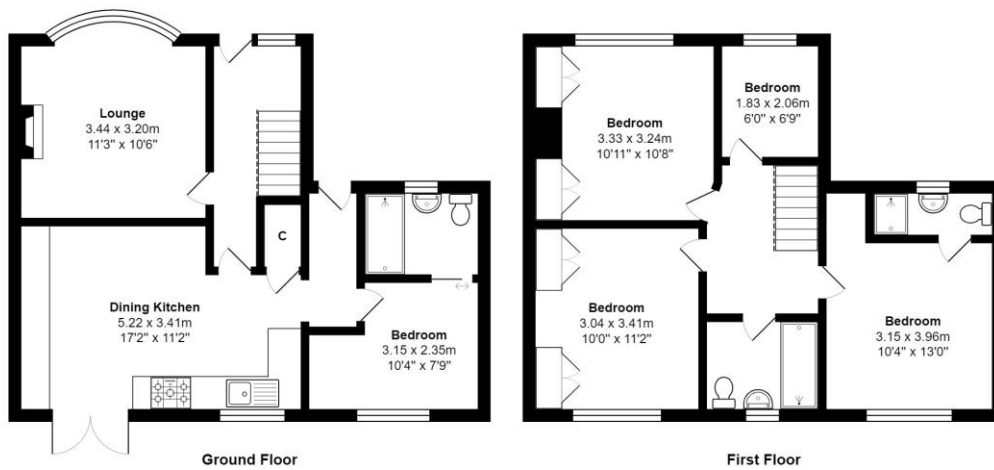
FURTHER INFORMATION

Council Tax - Band B

Tenure - Freehold

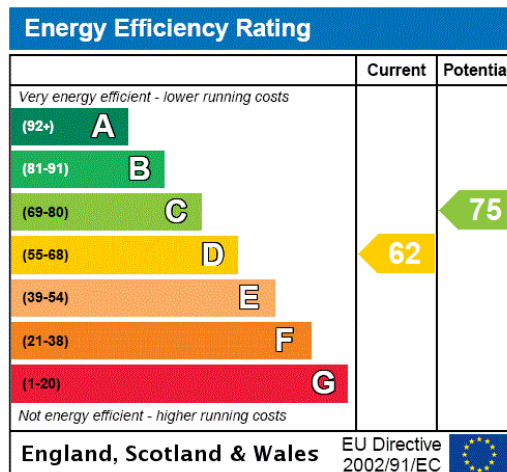
The Fixtures & Appliances included have not been tested and therefore no guarantee can be given that they are in working order. Every care has been taken with the preparation of these sales particulars, but complete accuracy cannot be guaranteed. If there is any point, which is of particular importance you should obtain independent verification, or we will be pleased to check them for you. These sales particulars do not constitute a contract or part of a contract.





Total Area: 98.1 m² ... 1056 ft²

All measurements are approximate and for display purposes only



T 01274 601119 **E** wibsey@robertwatts.co.uk **W** robertwatts.co.uk
 Wibsey Office: 140 High Street, Wibsey, BD6 1JZ

f RWEstateAgents **t** @robertwatts_

arla | propertymark naea | propertymark