



## 2 Mount Road, Eccleshill, Bradford, BD2 2JD

NO CHAIN - benefiting from many recent improvements so YOU don't have to! Stone built END TERRACE currently providing TWO DOUBLE BEDROOM accommodation, the good size bathroom and modern kitchen further add to the appeal here. Of likely appeal to a variety of buyers, especially those looking for easy access to many local amenities including MORRISONS and access to multiple schools. Contact Robert Watts to arrange YOUR VIEWING today.

**Offers Over £120,000**

**T** 01274 614804 **E** highfield@robertwatts.co.uk **W** robertwatts.co.uk  
Highfield Office: 21 Highfield Road, Bradford, BD2 2AU

**f** RWEstateAgents **t** @robertwatts\_

arla | propertymark naea | propertymark

## 2 Mount Road, Eccleshill, Bradford, BD2 2JD

### **COUNCIL TAX Bradford**

Band A

### **TENURE Freehold**

### **DIRECT ACCESS TO**

### **LOUNGE 15'9" x 11'6" (4.8m x 3.5m)**

### **KITCHEN 9'3" x 8'4" (2.82m x 2.54m)**

Selection of modern wall and base units, built-in oven, hob and extractor. Space for auto-washer. Access to cellar

### **CELLAR** With light

### **BEDROOM ONE 14'1" x 11'8" (4.3m x 3.56m)**

### **ATTIC BEDROOM TWO 13'8" x 11'7" (4.17m x 3.53m)**

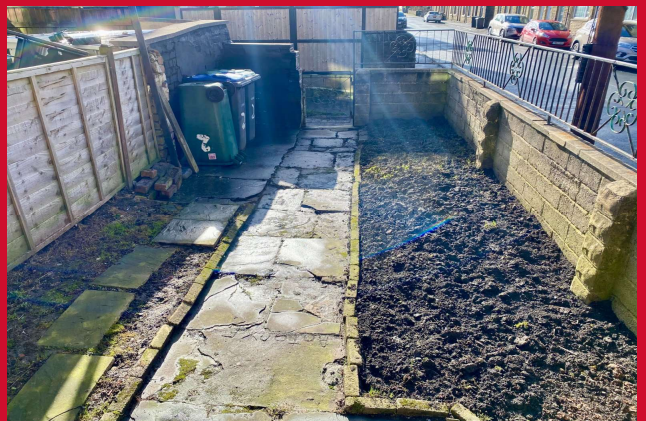
Gable window

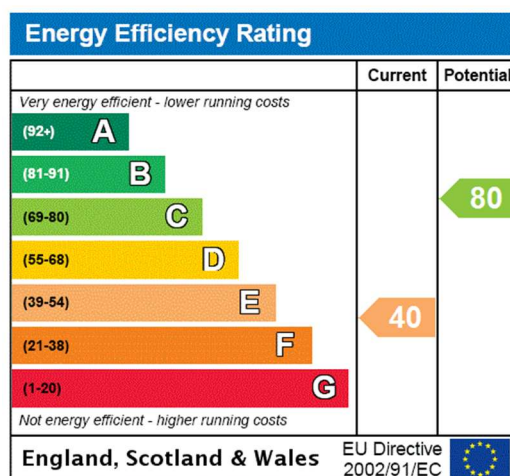
### **BATHROOM** Good size bathroom, three piece white suite

### **OUTSIDE** Yard garden to the rear. Small garden to the front

The Fixtures & Appliances included have not been tested and therefore no guarantee can be given that they are in working order. Every care has been taken with the preparation of these sales particulars, but complete accuracy cannot be guaranteed. If there is any point, which is of particular importance you should obtain independent verification, or we will be pleased to check them for you. These sales particulars do not constitute a contract or part of a contract.







01274 614804 
 highfield@robertwatts.co.uk 
 robertwatts.co.uk  
 Highfield Office: 21 Highfield Road, Bradford, BD2 2AU

RWEstateAgents 
 @robertwatts\_

arla | propertymark naea | propertymark