



21 Stirling Crescent, Holmewood, Bradford, BD4 0DA

OPEN ASPECT VIEW

Semi Detached that is situated in a lovely position on the estate with open aspect view. Provides 2 Bedrooms and we feel will make a great buy for first time buyers/owner occupiers. Must be viewed.

The accommodation comprises: Entrance Hall, Lounge, Kitchen, 2 Bedrooms & Bathroom.

Asking Price £120,000

21 Stirling Crescent, Holmewood, Bradford, BD4 0DA

ENTRANCE HALL

LOUNGE 13' x 12' (3.96m x 3.66m)

Attractive feature fireplace with gas fire.

KITCHEN 12' x 8' (3.66m x 2.44m)

Well equipped kitchen with base and wall units, worktops and sink unit.

SIDE/REAR ENTRANCE LOBBY

LANDING

BEDROOM 1 12' (3.66) x 10' (3.05) + wardrobe

Full height fitted wardrobe.

BEDROOM 2 10'10" x 8' (3.3m x 2.44m)

SHOWER ROOM/W.C. Corner shower cubicle. Heated towel rail.

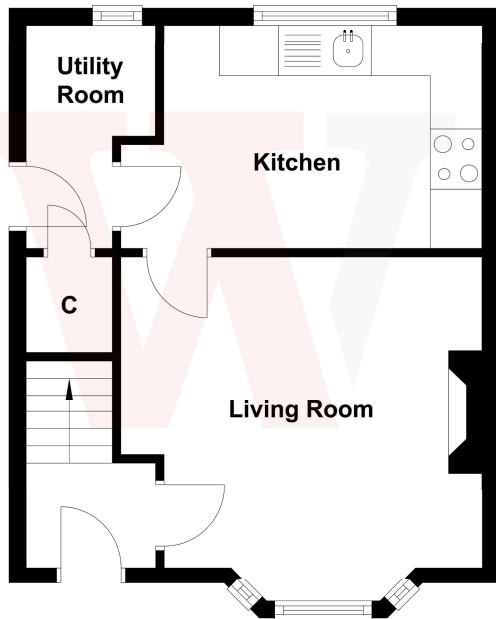
OUTSIDE Garden to front. Pleasant, split level garden to the back.

PLEASE NOTE If you proceed with an offer on this property we are obliged to undertake mandatory Anti Money Laundering checks on behalf of HMRC. All estate agents have to do this by law and we outsource this process to our compliance partners Credas who charge a fee for this service.

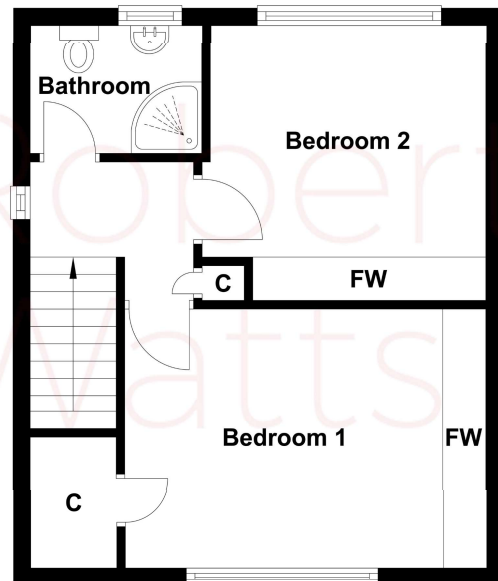
The Fixtures & Appliances included have not been tested and therefore no guarantee can be given that they are in working order. Every care has been taken with the preparation of these sales particulars, but complete accuracy cannot be guaranteed. If there is any point, which is of particular importance you should obtain independent verification, or we will be pleased to check them for you. These sales particulars do not constitute a contract or part of a contract.



Ground Floor



First Floor



Score	Energy rating	Current	Potential
92+	A		
81-91	B		
69-80	C		78 C
55-68	D	63 D	
39-54	E		
21-38	F		
1-20	G		