



11 Rayleigh Street, East Bowling, Bradford, BD4 7JR

IDEAL FOR BUY TO LET: Attention Landlords:

NEW DECORATED & CARPETED: Very well presented Rear Back to Back Terrace that is situated in a cul de sac would make an ideal buy for rental purposes. Having been successfully let for many years and provides 2 BEDROOMS with GARDEN.

The accommodation comprises: Lounge, Kitchen, 2 Bedrooms & Bathroom.

Asking Price £80,000

11 Rayleigh Street, East Bowling, Bradford, BD4 7JR

LOUNGE 15' x 13' max (4.57m x 3.96m max)

KITCHEN 11'10" x 5'10" (3.6m x 1.78m)

Selection of base and wall units, worktops and sink unit. Access to:-

CELLAR

LANDING

BEDROOM 1 15' x 11'10" max (4.57m x 3.6m max)

Built in wardrobe.

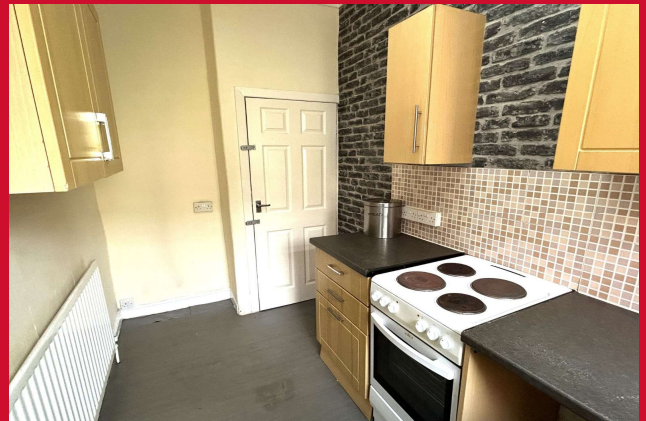
BEDROOM 2 14' x 6'11" (4.27m x 2.1m)

BATHROOM/W.C. 9' x 8' (2.74m x 2.44m)

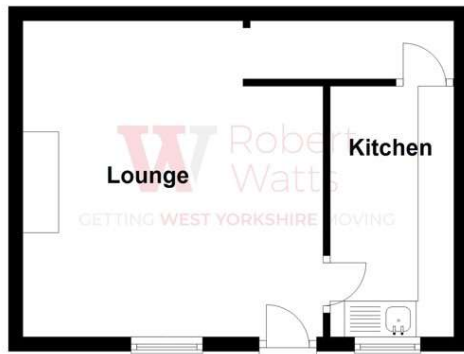
3 piece white bathroom suite.

OUTSIDE Enclosed, low maintenance garden.

The Fixtures & Appliances included have not been tested and therefore no guarantee can be given that they are in working order. Every care has been taken with the preparation of these sales particulars, but complete accuracy cannot be guaranteed. If there is any point, which is of particular importance you should obtain independent verification, or we will be pleased to check them for you. These sales particulars do not constitute a contract or part of a contract.



Ground Floor



First Floor

