



22a Cordingley Street, Tong Street, Bradford, BD4 0PP

DO NOT MISS THIS: Super opportunity to buy this really well appointed "CHALET STYLE" DETACHED, that provides family sized 3 DOUBLE BEDROOMED accommodation. Sat on a GOOD SIZED PLOT, the property has a 30 FOOT DETACHED GARAGE / WORKSHOP that would be ideal for local tradesman or for storage. With lovely LANDSCAPED GARDENS & AMPLE PARKING.

The accommodation comprises: Hallway, Lounge, Dining Kitchen, 3 Bedrooms & Bathroom

Asking Price £200,000

22a Cordingley Street, Tong Street, Bradford, BD4 0PP

HALLWAY

LOUNGE 20'8" x 9'9" (6.3m x 2.97m)

OPEN PLAN KITCHEN DINER 18'5" (5.61) x 11'6" (3.5) narrowing to 8'5" (2.57)

Well equipped kitchen with a range of base and wall units, worktops and sink unit. Plumbing for washing machine. Built in oven, hob and extractor fan. Splashback tiled walls.

GROUND FLOOR BEDROOM 1 12'1" x 10'6" (3.68m x 3.2m)

Double Bedroom

LANDING

BEDROOM 2 11'3" x 9'8" (3.43m x 2.95m)

Double Bedroom

BEDROOM 3 10'6" x 9'3" (3.2m x 2.82m)

Double bedroom.

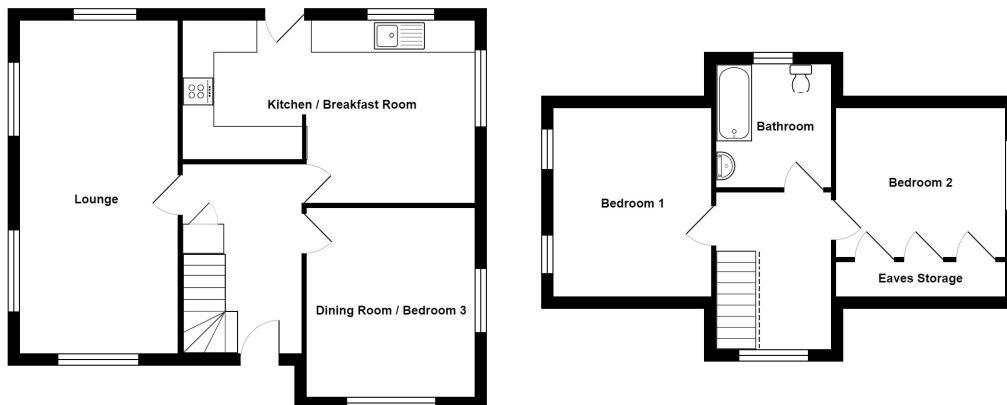
BATHROOM 7'8" x 7'3" (2.34m x 2.2m)

3 piece white bathroom suite with shower over the bath.

OUTSIDE Occupying a good sized corner plot with enclosed landscaped gardens. Driveway. Ample parking for several cars with a detached garage/workshop 30'3" x 15'7" (approx.). Ideal for mechanic working from home or for storage.

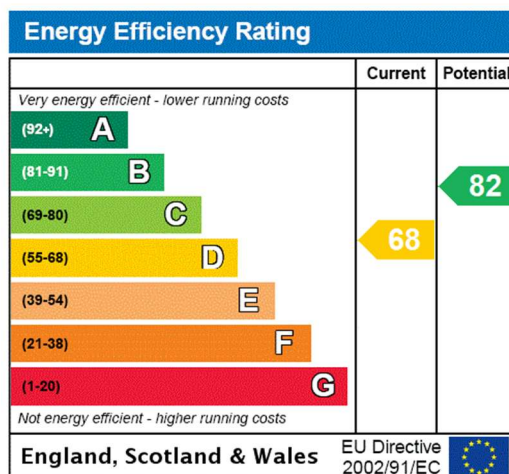
The Fixtures & Appliances included have not been tested and therefore no guarantee can be given that they are in working order. Every care has been taken with the preparation of these sales particulars, but complete accuracy cannot be guaranteed. If there is any point, which is of particular importance you should obtain independent verification, or we will be pleased to check them for you. These sales particulars do not constitute a contract or part of a contract.





Total Area: 97.1 m² ... 1045 ft²

All measurements are approximate and for display purposes only



01274 689589
 birkenshaw@robertwatts.co.uk
robertwatts.co.uk
 Birkenshaw Office: 704 Bradford Road, Birkenshaw, BD11 2AE

RWEstateAgents
 @robertwatts_

arla | propertymark naea | propertymark