



## 24 Burberry Close, Bierley, Bradford, BD4 6QF

**NO CHAIN:** Well presented SEMI DETACHED providing 2 BEDROOMED accommodation. Occupies cul de sac position and been part of this ever popular development. DRIVEWAY & GARDENS & NO CHAIN.

The accommodation comprises: Entrance Hall, Lounge, Kitchen, 2 Bedrooms & Bathroom.

**Offers in the region of £140,000**

**T** 01274 689589 **E** [birkenshaw@robertwatts.co.uk](mailto:birkenshaw@robertwatts.co.uk) **W** [robertwatts.co.uk](http://robertwatts.co.uk)  
Birkenshaw Office: 704 Bradford Road, Birkenshaw, BD11 2AE

**f** [RWEstateAgents](#) **t** [@robertwatts\\_](#)

[arla](#) | [propertymark](#) [naea](#) | [propertymark](#)

# 24 Burberry Close, Bierley, Bradford, BD4 6QF

## ENTRANCE HALL

**LOUNGE 14'3" x 12'8" (4.34m x 3.86m)**

**KITCHEN 11'10" max x 12'7" (3.6m max x 3.84m)**

Well equipped kitchen with a range of base and wall units, worktops and sink unit. Integrated electric oven, gas hob and extractor fan. Storage cupboard.

## LANDING

**BEDROOM 1 8'11" x 12'7" (2.72m x 3.84m)**

**BEDROOM 2 12'7" x 8'8" (3.84m x 2.64m)**

**BATHROOM** Three piece white bathroom suite with shower over the bath. Storage cupboard.

**OUTSIDE** Occupying a cul de sac position. Garden to the front with driveway. Enclosed good sized garden to the rear. Patio area.

**TENURE** Freehold

**COUNCI TAX** Band B

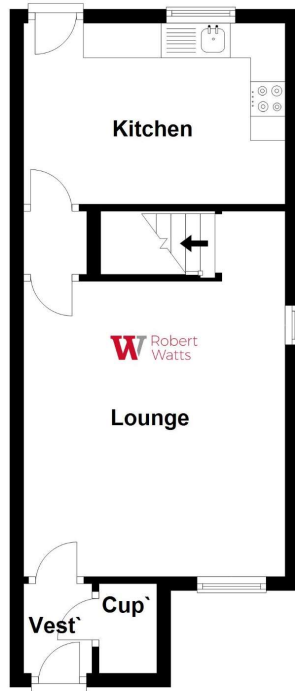
**MORTGAGES** We recommend The Mortgage Maestro, who are whole of market mortgages brokers. They have exclusive rates that are not available on the high street. Ben is on hand to discuss all of your mortgage needs. If you would like to arrange an appointment, contact us today.

Your home may be repossessed if you do not keep up repayments on your mortgage.

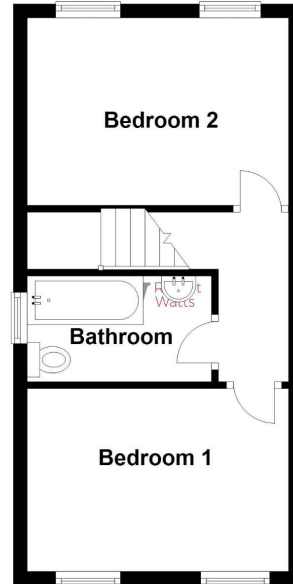
The Fixtures & Appliances included have not been tested and therefore no guarantee can be given that they are in working order. Every care has been taken with the preparation of these sales particulars, but complete accuracy cannot be guaranteed. If there is any point, which is of particular importance you should obtain independent verification, or we will be pleased to check them for you. These sales particulars do not constitute a contract or part of a contract.



**Ground Floor**

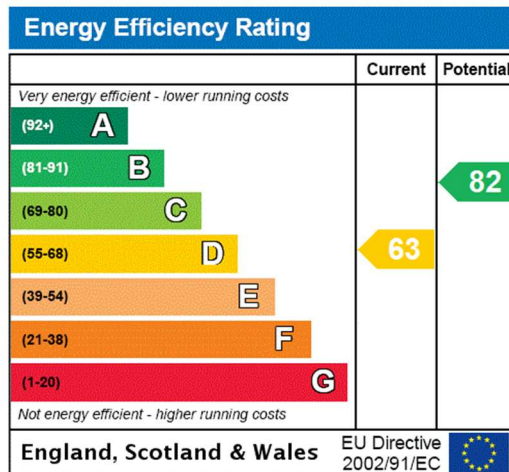


**First Floor**



Please note this floor plan is not to scale and should not be relied on as a basis to purchase this property.  
Plan produced using PlanUp.

**24 Burberry Close**



01274 689589 
 [birkenshaw@robertwatts.co.uk](mailto:birkenshaw@robertwatts.co.uk)
[robertwatts.co.uk](http://robertwatts.co.uk)  
 Birkenshaw Office: 704 Bradford Road, Birkenshaw, BD11 2AE

RWEstateAgents 
 @robertwatts\_

arla | propertymark    naea | propertymark